

DATA SHEET

Product Description

Willseal® Seismic is a pre-compressed, self-expanding open micro-cell polyurethane foam impregnated with a hydrophobic, acrylic polymer and coated with a factory-applied silicone sealant. It is designed to provide a watertight, dust-proof, noise-reducing, thermally insulating, and UV stable primary seal that does not require invasive anchoring for installation.

Basic Uses

Typically used as an external joint sealant, Willseal Seismic can be used as a primary seal in vertical applications. The following are acceptable applications for Willseal Seismic:

- Primary expansion, control, isolation joints
- Primary construction joints
- Retrofit and seismic joints
- Vertical expansion joints (Willseal Seismic HS for horizontal joints)
- Joints in pre-cast concrete, masonry, brick and facades
- Exterior insulation finish systems (EIFS)
- Exterior panel systems (masonry, granite, metal, curtainwalls)

Features & Benefits

Willseal Seismic is a one-step primary sealant for exposed areas where color matching is important. It has a puncture-resistant, elastomeric coating on the exterior surface, which can be factory colored to match most construction substrates or sealants.

- Allows for up to 100% ($\pm 50\%$) movement
- Accommodates rapid rates of joint movement
- Has excellent compression recovery
- Is supplied in pre-compressed state for ease of installation
- Utilizes non-invasive anchoring
- Is not based on wax, asphalt or bitumastic impregnation
- Can be applied in various weather and temperature conditions
- No unbonded laminations
- Available with a single- or double-sided sealant coating

Availability

Willseal Seismic is available from your authorized Tremco distributor, or any Tremco or Willseal Sales Representative. For more information contact Customer Service by phone at 800-274-2813 or email custserv@willseal.com.

Colors

- Tremco Spectrem colors: White, Precast White, Ivory, Sandstone, Buff, Off-White, Limestone, Anodized Aluminum, Gray, Aluminum Stone, Light Bronze, Champagne, Dusty Rose, Adobe Tan, Rustic Brick, Charcoal, Bronze, Dark Bronze, Black
- Industry standard colors, custom colors upon request.

Limitations

- Avoid contact of Willseal Seismic with hydrocarbon solvents, solvent based paints, and corrosive chemicals.
- Do not install when substrate or ambient temperatures are below -14°F (-25°C) or above 95°F (35°C). Consult a Tremco or Willseal Sales Representative for extreme temperature installation information
- Will not adhere to surfaces contaminated by oil or grease. Concrete should clean, dry & sound.

Storage

Store material in a dry, enclosed area, off the ground, and out of direct sunlight. Store material at a minimum of 68°F (20°C). If ambient storage temperatures fall below 50°F (10°C), warm material up to 68°F (20°C) for a minimum of 24 hours prior to installation, regardless of temperature at location of installation.

Packaging

- Joint sizes from 1/2" to 8" in sticks (6.5 ft lengths)
- Custom sizes available upon request
- Factory supplied transitions available

Expansion Time

Material will self-expand to fill the joint. Expansion time will vary based on humidity, temperature and storage conditions for the prior 24 hours. Estimated expansion time at 50% R.H. @ 70°F (21°C) is approximately 1-2 minutes. Material will continue to expand and equalize in the joint.

Warranty

Willseal Products are warranted to be free of defects in materials, but no warranty is made as to appearance or color. No other warranty, expressed or implied, is made with respect to Willseal Products, including warranties of MERCHANTABILITY and FITNESS FOR A PARTICULAR PURPOSE. The sole and exclusive remedy under this warranty shall be to replace or refund the purchase price of the quantity of Willseal Products proven to be defective, and there is no liability whatsoever for other loss or damage.

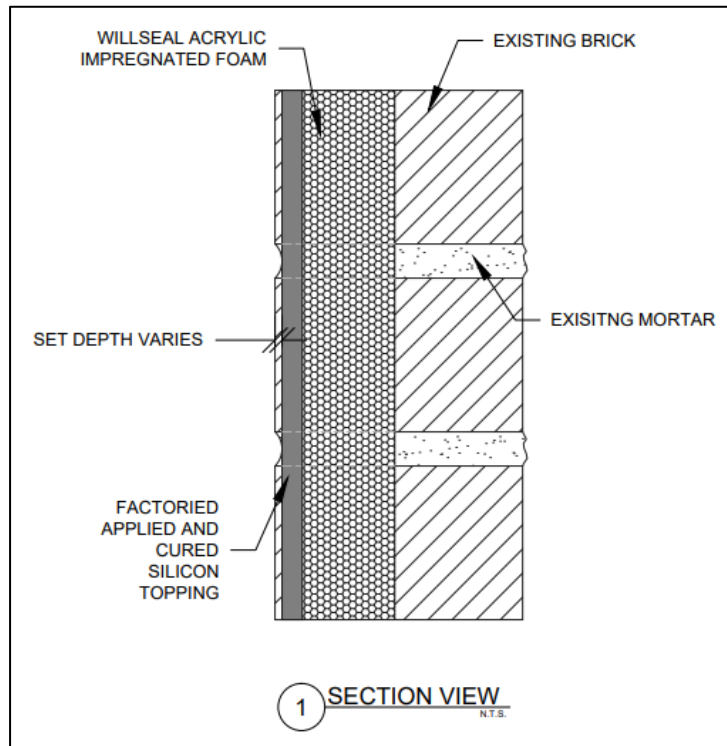
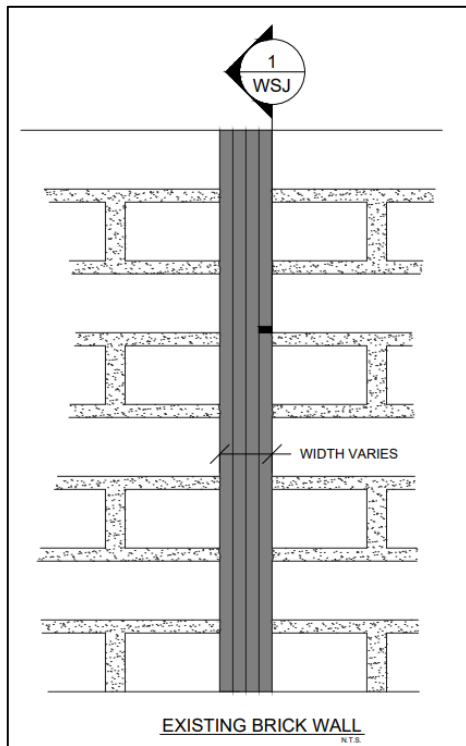
Please refer to our website at www.willseal.com for the most up-to-date Product Data Sheets.

NOTE: All Willseal Safety Data Sheets (SDS) are in alignment with the Globally Harmonized System of Classification and Labelling of Chemicals (GHS) requirements.

TYPICAL PHYSICAL PROPERTIES

PROPERTY	DESCRIPTION	
Foam Color	Black	
Temperature Stability Range	- 40°F (- 40°C) to 185°F (85°C)	
Staining	None	
Flash Point	590°F (310°C)	
PROPERTY	TEST METHOD	TYPICAL RESULTS
Thermal Conductivity	ASTM C518	0.05 W/m.-°C
Tensile Strength	ASTM D3574	21 psi min. ¹
Ultimate Elongation	ASTM D3574	125% +/- 20%
Compression Set	ASTM D3574	2.5% max.
STC	ASTM E90-09	54
OITC	ASTM E90-09	48
Flammability	UL 94VO Meets CAL 117	Self-Extinguishing
Durometer Hardness	ASTM D2240	Shore A 15pts.
Shear Strength		Min 8N/cm ²

1 Attachment method of Willseal Seismic was in a single joint compressed to 50% of original foam thickness. Joint material was constructed of calcium silicate board and is representative of field installation of the product.



0420/WSEI-DS

Please refer to our website at www.willseal.com for the most up-to-date Data Sheet.

Willseal, A Tremco Affiliate Brand

34 Executive Drive • Hudson NH 03051 • 800.274.2813 (US and Canada) or 603.273.0707 (International)